

# Metrics Workshop

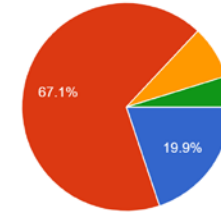
## Survey 1 SRW/CAM

15 December 2020

Tara Jensen, Geoff Manikin, Burkely Gallo, Jack Settelmaier,  
Linden Wolf, Sarah Lu, Deepthi Achuthavarier, Cristiana  
Stan, Yan Xue and UFS V&V AT

# SRW Application (142 responses)

Of which sector do you consider yourself a part?  
146 responses



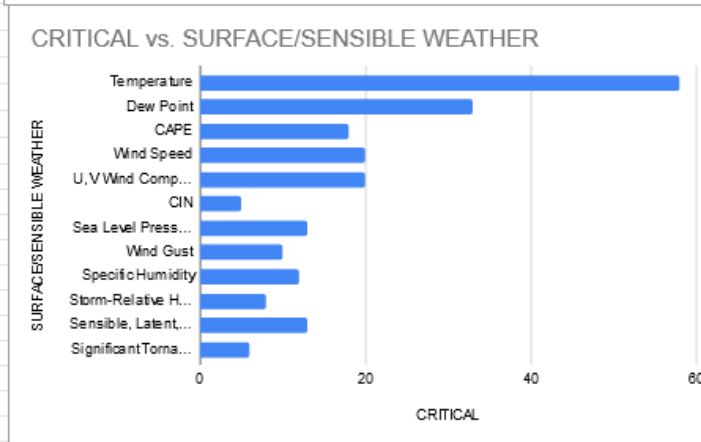
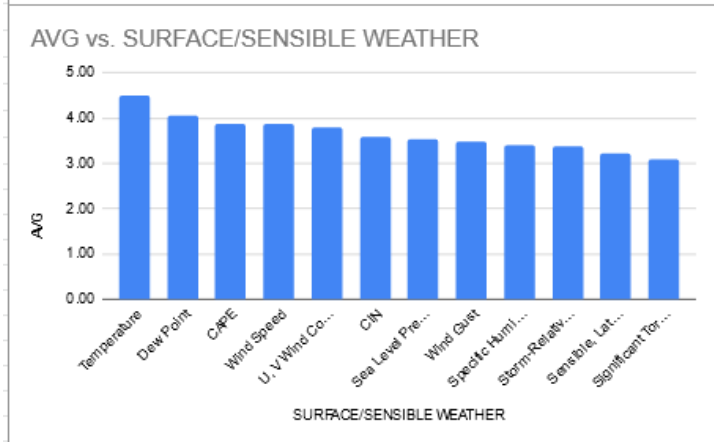
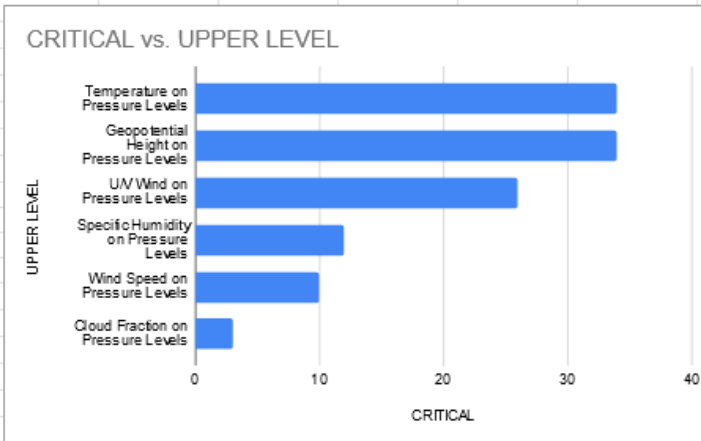
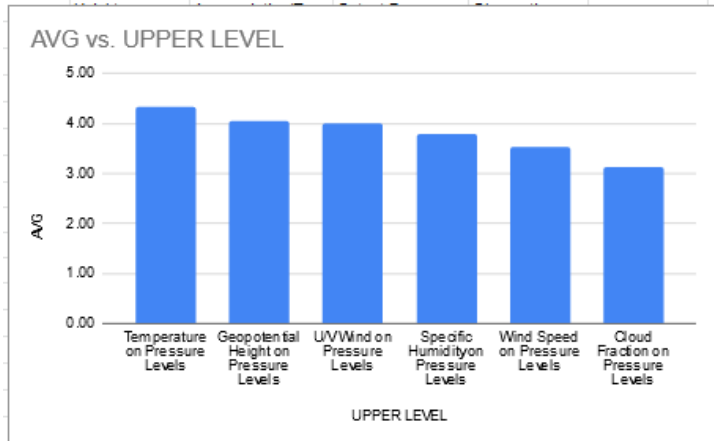
● Academic  
● Government  
● Private  
● Other

Top 3 fields for each subsection (mean rating; number of criticals)

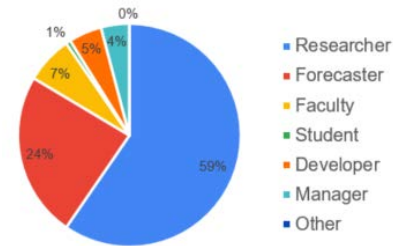
- Upper-Level Synoptic (79 responses):
  1. Temperature on Pressure Levels (4.33; 34)
  2. Geopotential Height on Pressure Levels (4.06; 34)
  3. U/V Wind on Pressure Levels (4.01; 26)
- Surface/Sensible Weather (102 responses):
  1. Temperature (4.51; 58)
  2. Dew Point (4.06; 33)
  3. CAPE (3.88; 18)
- Aviation (51 responses):
  1. Ceiling (4.53; 35)
  2. Visibility (4.51; 31)
  3. Turbulence (3.94; 12)
- Precipitation, Severe, and Winter Weather (114 responses):
  1. Precipitation (4.53; 70)
  2. Precipitation Type (4.05; 25)
  3. Simulated Reflectivity (3.98; 42)
- Air Quality (32 responses):
  1. PBL Depth (4.13; 11)
  2. Particulate Matter (4.07; 11)
  3. Aerosol Optical Depth (3.83; 9)
- Land Surface and Hydrologic (54 responses):
  1. Soil Moisture (4.20; 21)
  2. Latent Heat Flux (4.02; 15)
  3. Sensible Heat Flux (4.02; 13)

# SRW Complete Rankings

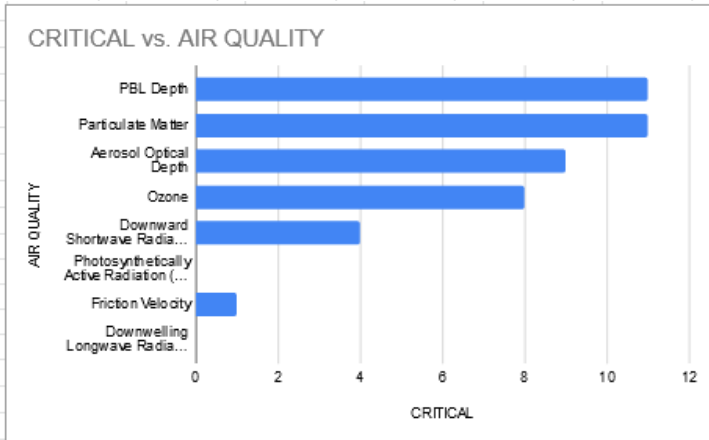
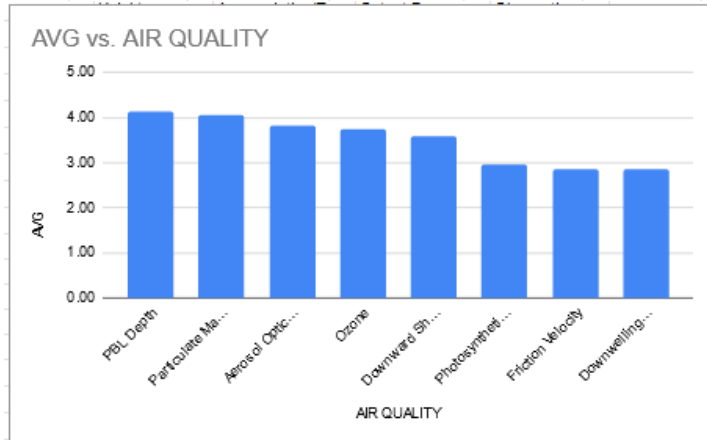
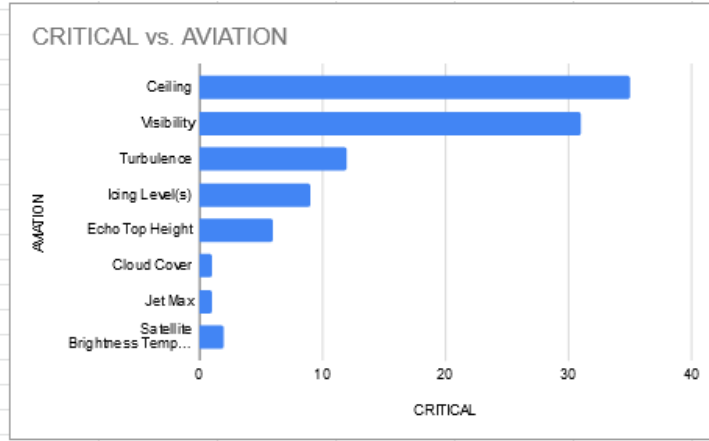
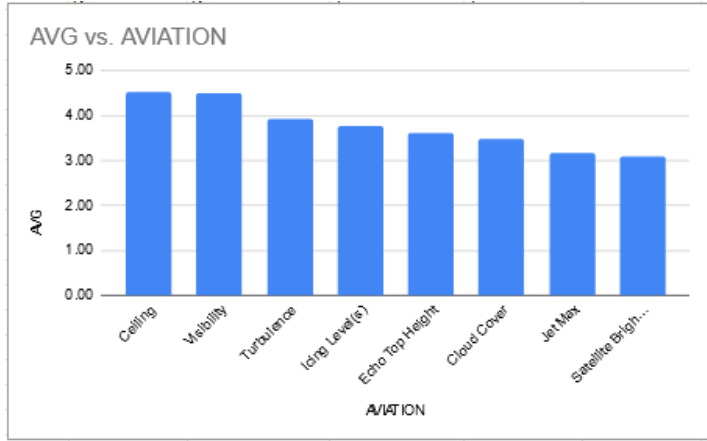
With which of these job descriptions do you most identify?



Short Range Weather Application



# SRW Complete Rankings, cont.



# SRW Complete Rankings, cont.

